



QUFRESH[®] by



Patents Pending

FRESH AIRevolution

Contractors and builders now have a practical, cost effective mechanical offering for introducing constant fresh air from outside into the residence, meeting the fresh air CFM requirements while also accounting for temperature and humidity levels.

Always the Lowest HERS Index

With a range of CFM usage from 40 to 120 and electrical usage from 13 to 31 watts, the QuFresh from Air King will delivers the same or lower HERS Ratings than almost any other air intake solution on the market.

- 1-2 HERS Index points lower than Central Integrated fan supply only solutions (with ECM Motors)
- 2-5 HERS Index points lower than Central Integrated fan supply only solutions (with Split Capacitor Motors)

Rating Simplicity – Making the Rater’s job Easier

- Independent fan delivers easy to measure CFM that can be adjusted on site
- Gives rater complete confidence of passing RESNET QA oversight on ventilation
- Published performance specifications on HVI website
- When properly sized, meets Energy Code and ASHRAE 62 requirements

HVAC Plug and Play – Help your Contractor be Successful

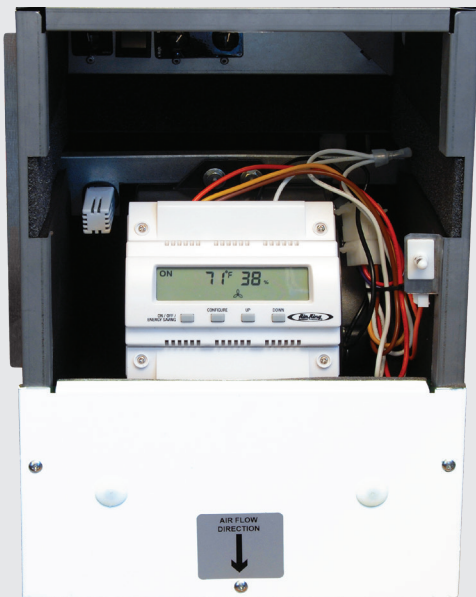
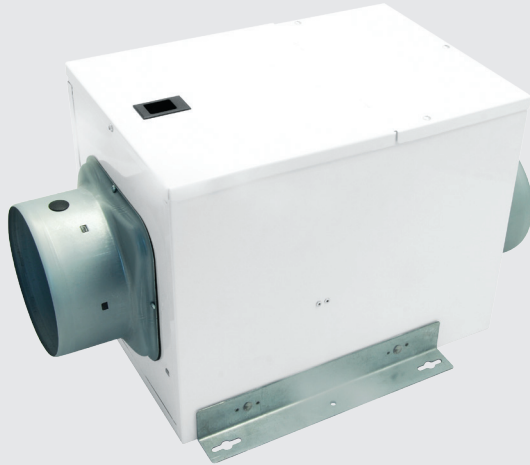
- Multiple mounting options
- Independent operation - does not need to be wired to HVAC system
- Simplicity in wiring (all control wiring done at the factory)
- Only needs 115v wired into the unit by the electrician
- Easy to set – dial in desired CFM then select ranges for temperature and humidity

Low First Cost – Positive Results for Less

- Low first cost for QuFresh by Air King product and installation material
- Simple labor – hang unit, install duct and outlet terminals
- Does not require HVAC contractor control wiring – NO transformer, thermostat wire, or remote sensors

“Do No Harm” – Reduce the number and impact of unintended consequences

- Provides constant fresh air and will automatically shut off when it is too hot, too cold, too humid or too dry
- Low energy use with efficient independent fan, maximum 30.1 watts
- Almost silent operation allows the fan to be installed almost anywhere without the sound being noticed by the occupants



HVI Certified Performance

Model	Duct Size	Static Pressure	Speed	Watts
QFAM	6"	0.2	40 CFM	12.9
			50 CFM	13.0
			60 CFM	15.1
			70 CFM	17.1
			80 CFM	19.5
			90 CFM	21.8
			100 CFM	26.3
			110 CFM	27.5
			120 CFM	30.1

[Learn More](#)



www.QuFresh.com